

<b>Title:</b>	Brain Injury Guidelines (BIG)				
<b>Department/Service Line:</b>	Trauma Services				
<b>Approver(s):</b>	Trauma Operations Committee 1/24/2018				
<b>Location/Region/Division:</b>	Baylor University Medical Center				
<b>Document Number:</b>	BUMC.Trauma.48.G				
<b>Effective Date:</b>	2/1/2018	<b>Last Review/ Revision Date:</b>	1/20/2018	<b>Origination Date:</b>	11/2017

## SCOPE

The guideline applies to all healthcare providers caring for trauma patients at Baylor University Medical Center (BUMC).

## DEFINITIONS

None.

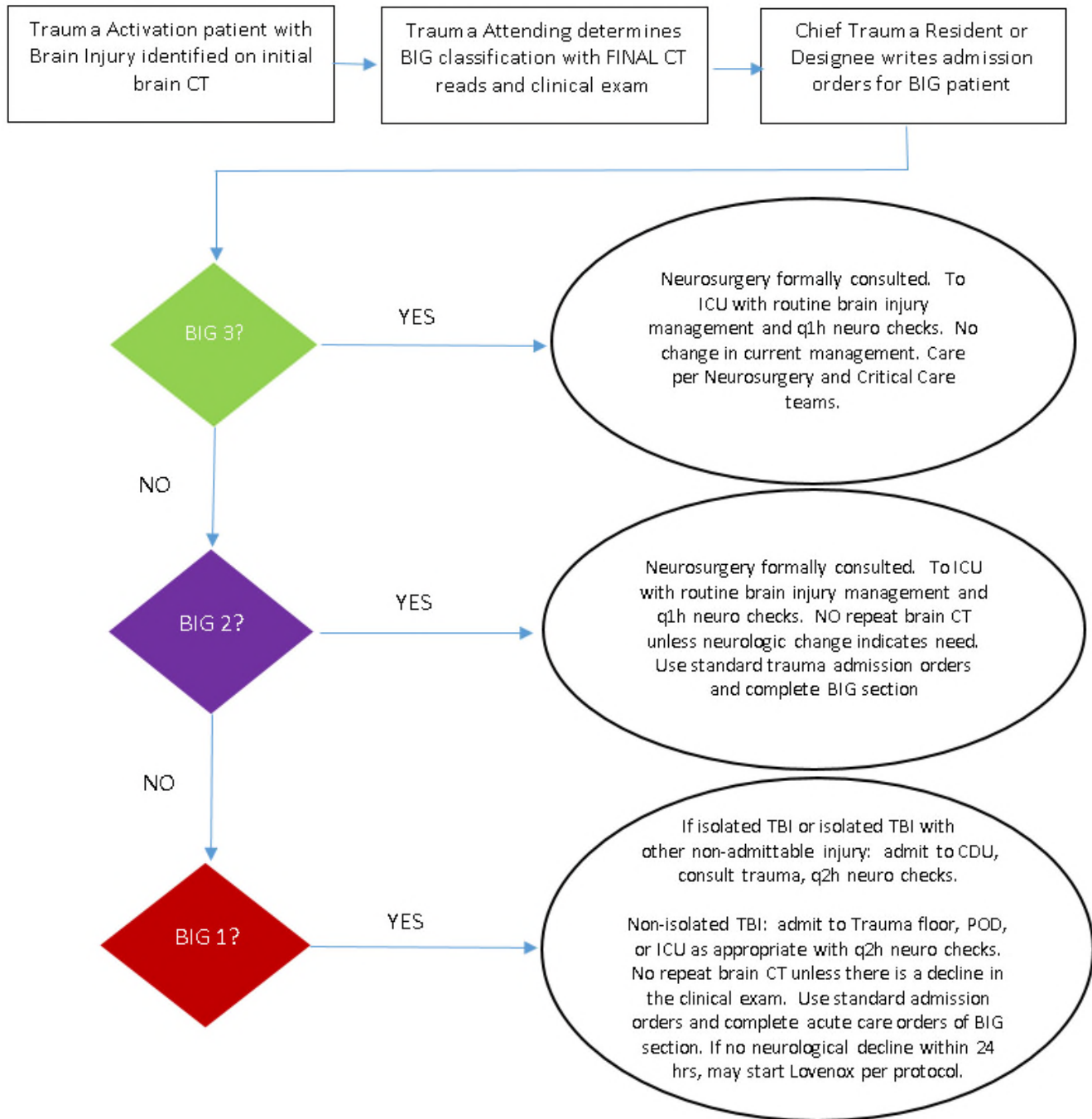
## GUIDELINE

Patients with an intra-cranial hemorrhage on initial CT will be evaluated by the trauma team and will be categorized as BIG 1, BIG 2, or BIG 3 following the below criteria.

<b>BUMC Modified BIG Criteria</b>			
<b>Variables</b>	<b>BIG 1</b>	<b>BIG 2</b>	<b>BIG 3</b>
GCS	14-15	> or equal to 13	< or equal to 12
Skull Fracture	Non- displaced	Non-Displaced	Displaced
Intoxication	No	No/Yes	No/Yes
CAMP (Coumadin, Aspirin, Plavix)	No	No	Yes
SDH	≤ 4mm	5 - 7 mm	≥ 8 mm
EDH	≤ 4mm	5 - 7 mm	≥ 8 mm
IPH	≤ 4mm, 1 location	5 - 7 mm, 2 locations	≥ 8 mm, multiple locations
SAH	Trace	Local	Scattered
IVH	No	No	Yes

GCS, Glasgow Coma Scale; SDH, subdural hemorrhage; EDH, epidural hemorrhage; IPH, intra-parenchymal hemorrhage; SAH, subarachnoid hemorrhage; IVH, intra-ventricular hemorrhage.

## PROCEDURE



## ATTACHMENTS

None.

## RELATED DOCUMENTS

None.

## REFERENCES

1. CDC IPaC. Traumatic Brain Injury, <http://www.cdc.gov/traumaticbraininjury/statistics.html>. Accessed 12<sup>th</sup> January 2014.
2. Centers for Disease Control and Prevention (CDC), National Center for Injury Prevention and Control. Report to Congress on mild traumatic brain injury in the United States: steps to prevent a serious public health problem. Atlanta (GA): Centers for Disease Control and Prevention; 2003.
3. Huynh T, Jacobs DG, Dix S. Utility of neurosurgical consultation for mild traumatic brain injury. *Am Surg* 2006 Dec;72(12):1162-5; discussion 1166-7.
4. Rhodes M, Lester M, Morrow M. Selective neurosurgical consultation for trauma. *J Trauma* 1993;35:979.
5. Klein Y, Donchik V, Jaffe D, et al. Management of patients with traumatic intracranial injury in hospitals without neurosurgical service. *J Trauma*. 2010 Sep; 69(3):544-8.
6. Wu C, Orringer DA, Lau D, et al. Cumulative incidence and predictors of neurosurgical interventions following nonsevere traumatic brain injury with mildly abnormal head imaging findings. *J Trauma Acute Care Surg*. 2012 Nov;73(5):1247-53.
7. Brown C.V., Weng J, Oh D, et al. Does routine serial computed tomography of the head influence management of traumatic brain injury? A prospective evaluation. *J Trauma*. 2004; 57(5):939-43.
8. Joseph B, Aziz H, Pandit V, et al A Prospective Three Year Study of Repeat Head Computed Tomography in Traumatic Brain Injury. *Journal of American College of Surgeons*. [Accepted, Due for Print 2014].
9. Aziz H, Rhee P, Pandit V, et al. Mild and moderate pediatric traumatic brain injury: replace routine repeat head computed tomography with neurologic examination. *J Trauma Acute Care Surg*. 2013 Oct; 75(4):550-4.
10. Joseph B, Friese R.S, Sadoun M et al. The Brain Injury Guidelines Project: Defining the management of Traumatic Brain injury by Acute Care Surgeons. *J Trauma Acute Care Surg*, (Accepted Due for print 2014)
11. Joseph B, Aziz H, Sadoun M et al. The Acute Care Surgery Model: Managing Traumatic Brain Injury without an Inpatient Neurosurgical Consultation. *J Trauma Acute Care Surg*. 2013 Jul;75(1):102-5
12. Joseph B, Aziz H, Pandit V et al Prospective Validation of the Brain Injury Guidelines: Managing Traumatic Brain Injury Without Neurosurgical Consultation. (Abstract presented at the Annual Meeting of the Western Association for the Surgery of Trauma, 2014).

The information contained in this document should not be considered standards of professional practice or rules of conduct or for the benefit of any third party. This document is intended to provide guidance and, generally, allows for professional discretion and/or deviation when the individual health care provider or, if applicable, the "Approver" deems appropriate under the circumstances.