

Sonosite X-Porte Bladder Volume Calculation

Baylor University Medical Center at Dallas
Department of Emergency Medicine
Scott Kurpiel MD MBA
Director of Clinical Ultrasound

Bladder Volume Measurement

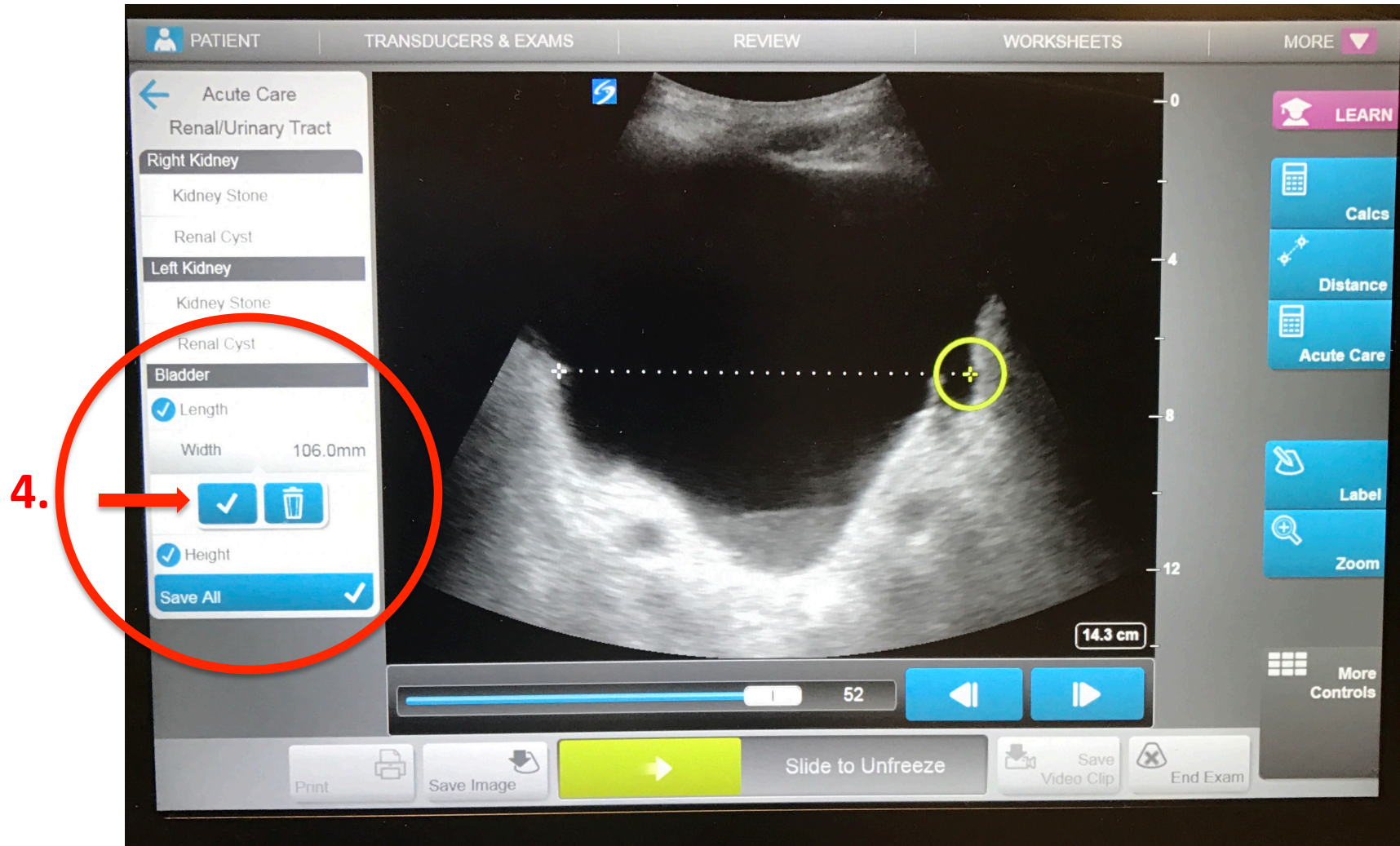
Step by Step:

1. Freeze image of bladder
2. Select “Acute Care” to calculate
3. Select “Renal/Urinary Tract”
4. Enter length/width, tap check mark in between to save distances
5. Unfreeze, and refreeze perpendicular bladder dimension
6. Enter depth, tap check mark
7. See bladder volume on top-left of monitor display (not touch screen)

Bladder Volume

The screenshot displays an ultrasound software interface with a central video frame showing a bladder measurement of 14.3 cm. The interface includes a top navigation bar with 'PATIENT', 'TRANSDUCERS & EXAMS', 'REVIEW', 'WORKSHEETS', and 'MORE'. On the left, a menu lists 'Acute Care' categories, with 'Renal/Urinary Tract' highlighted by a red circle and labeled '3.'. A central dropdown menu is open, showing options for 'Right Kidney', 'Left Kidney', and 'Bladder', with 'Bladder' selected. On the right, a vertical toolbar contains icons for 'LEARN', 'Calcs', 'Distance', 'Acute Care' (circled in red and labeled '2.'), 'Label', and 'Zoom'. At the bottom, a playback control bar features a 'Slide to Unfreeze' slider (circled in red and labeled '1. Freeze') and a 'Save' button.

Bladder Volume



Bladder Volume

