

TRANSIENT ISCHEMIC ATTACK (TIA) EVALUATION GUIDELINE

Patient presents with transient focal neurologic deficit, resolved

If intracranial hemorrhage is suspected, order STAT Head CT

ECG, CBC, CMP, PT/INR, PTT

ABCD3i

Age ≥ 60	1
SBP > 139 or DBP > 89	1
Speech Impairment only	1
Unilateral Weakness	2
Duration ≤ 59 minutes	1
Duration > 59 minutes	2
History of Diabetes	1
Dual TIA within 7 days	2
Total:	11

Note: Document ABCD3i score in the medical record.

Phone consult to on-call Neurologist during business hours (bypass if after hours)

0-7

≥ 8 or

Atrial Fibrillation/Flutter Present or Inability to follow up (i.e.: Private Pay)

MRI Brain wo
MRA Head wo
MRA Neck wo

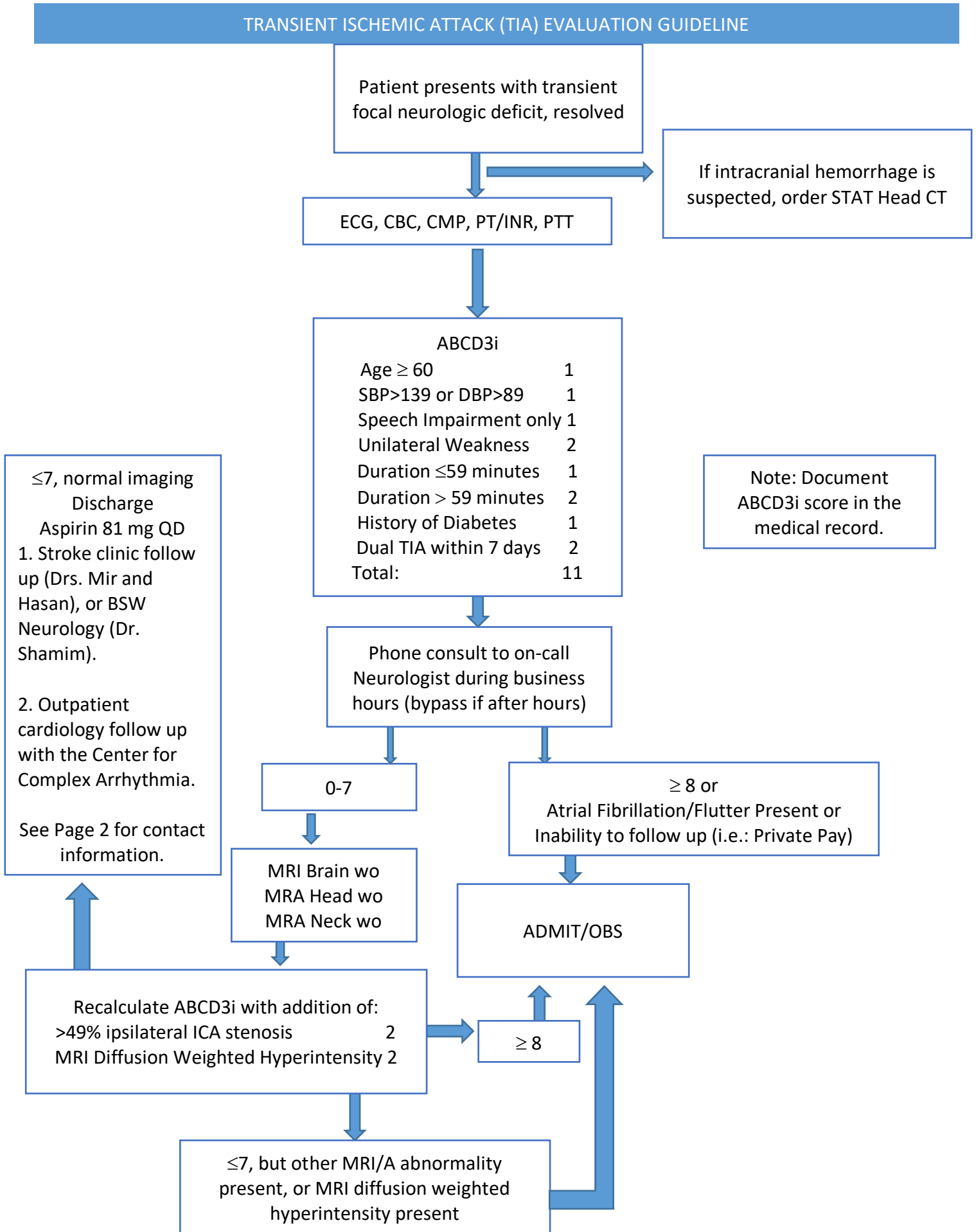
ADMIT/OBS

Recalculate ABCD3i with addition of:
>49% ipsilateral ICA stenosis 2
MRI Diffusion Weighted Hyperintensity 2

≥ 8

≤ 7 , but other MRI/A abnormality present, or MRI diffusion weighted hyperintensity present

≤ 7 , normal imaging
Discharge
Aspirin 81 mg QD
1. Stroke clinic follow up (Drs. Mir and Hasan), or BSW Neurology (Dr. Shamim).
2. Outpatient cardiology follow up with the Center for Complex Arrhythmia.
See Page 2 for contact information.



TRANSIENT ISCHEMIC ATTACK (TIA) EVALUATION GUIDELINE

NEUROLOGY FOLLOW UP OPTIONS (TO BE COMPLETED BY CARE CONNECT)

Baylor Comprehensive Stroke Clinic

Dr. Rashedul Hasan, MD

9101 North Central Expressway

Suite 400 Dallas, TX

(214) 820-9430

or

Baylor Scott and White Neurology

Dr. Sadat Shamim, MD

3417 Gaston Ave, Suite 935

Dallas, TX 75246

469-800-7680

CARDIOLOGY FOLLOW UP (TO BE COMPLETED BY CARE CONNECT)

Center for Complex Arrhythmias

621 North Hall Street, Suite 100

Dallas, TX 75226

214-820-0015

Please place the following order from the disposition screen in Epic:

The screenshot shows the Epic Disposition screen. The 'Disposition' section includes buttons for Discharge, Admit, Observation, AMA, and Transfer to Another Facility. The 'Impressions' section shows a suggested impression of 'Difficulty walking'. The 'Order List' section shows a new order for 'Amb Referral to Care Connect - type: Referral, code: REF980'.

The screenshot shows the 'Amb Referral to Care Connect' form. The 'Class' is set to 'Internal Referral'. The 'Referral' section includes options for 'Urgent (call for same or next day)', 'Urgent (call for same or next day)', 'Routine (within 1 week)', 'Routine (less than 4 weeks)', and 'Elective (optional)'. The 'Care Connect Referral' section includes options for 'Set up appointment with PCP', 'Set up appointment with Specialist (add comment)', 'Pathway Referral', 'CHF Clinic Referral', 'A Fib Referral (Cardiology Referral)', 'TIA Referral (Cardiology and Neurology Referral)', 'VTE Referral-Appointment first Thursday of the Month at Worth St Clinic', and 'Breast Imaging'. The 'TIA Referral (Cardiology and Neurology Referral)' option is selected.