

ACUTE RV FAILURE

Spiral of Death

DOUBLE HIT

Acute
Stressor

Increased RV
Afterload

Increased RV
Pressure

Decreased
RV Perfusion

Decreased
RV CO

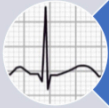
Reduced
Transeptal
Gradient

Decreased
LV CO

Systemic
Hypotension



ACUTE RV FAILURE RESUSCITATION



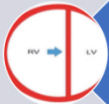
Optimize Rate & Rhythm →
Maintain Sinus



Avoid Negative Inotropes
BB and CCB



Reduce RV Afterload →
Improve Oxygenation
Improve Acidosis
Peak Pressures <30 (intubated)



Optimize RV Preload →
Typically they are hypervolemic
If fluid needed, give 250cc boluses



Vasopressors →
Norepinephrine/ Vasopressin/ Milrinone

