

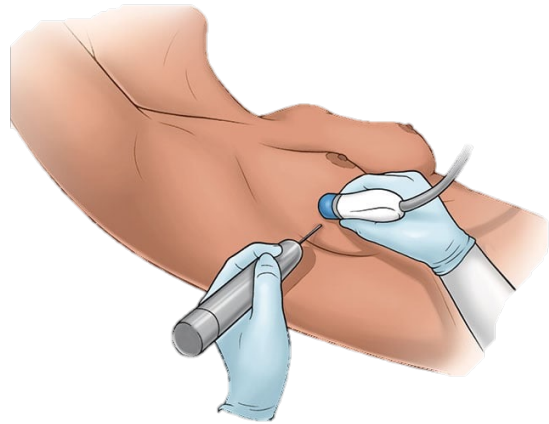
# BREAST ABSCESS



## SIMPLE

ASPIRATE UNDER US

10d ANTIBIOTICS  
WITH MRSA COVERAGE



## LACTATIONAL

OK TO ASPIRATE  
DO NOT I&D → MILK FISTULA

DICLOXACILLIN 500 MG QID

CONTINUE FEEDING

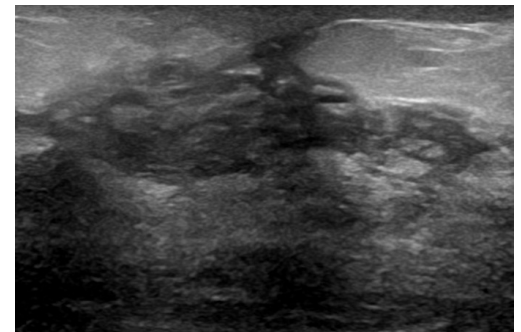


## IDIOPATHIC GRANULOMATOUS MASTITIS

RECURRENT ABSCESS

STERILE CULTURE

DO NOT I&D



AUTOIMMUNE

TX WITH HIGH DOSE  
STEROIDS

\*ALL PATIENTS SHOULD HAVE BREAST SPECIALIST FOLLOW UP\*